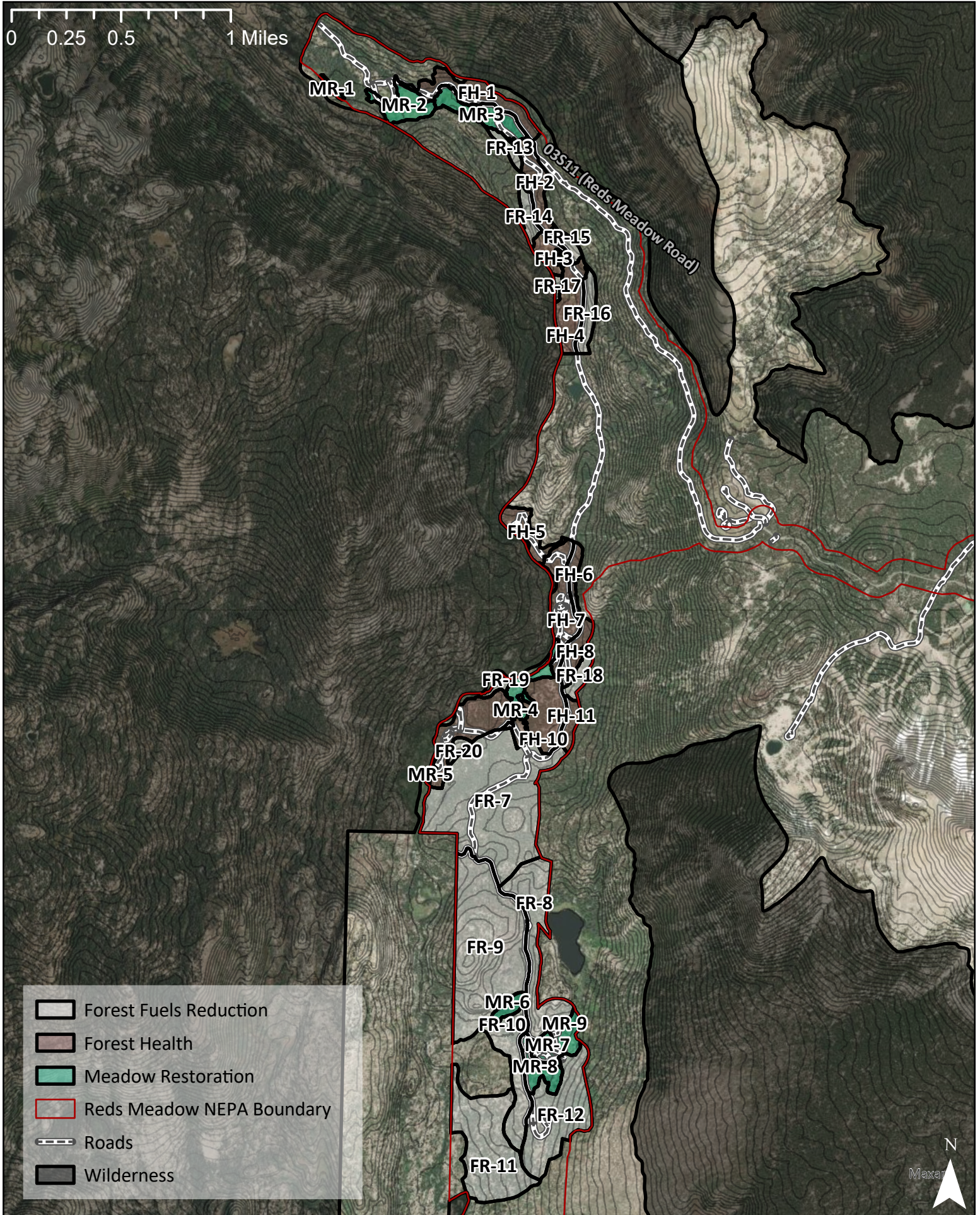
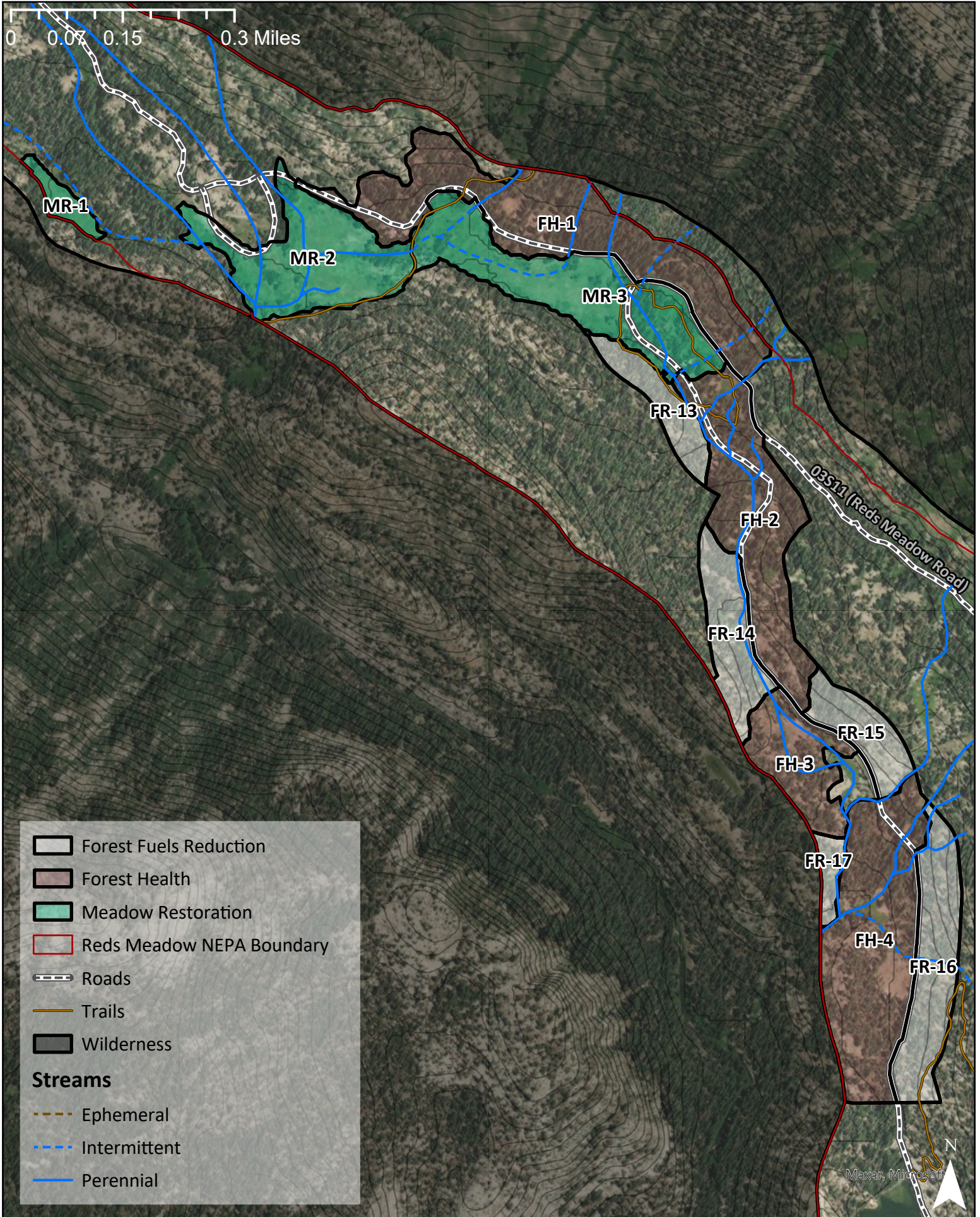


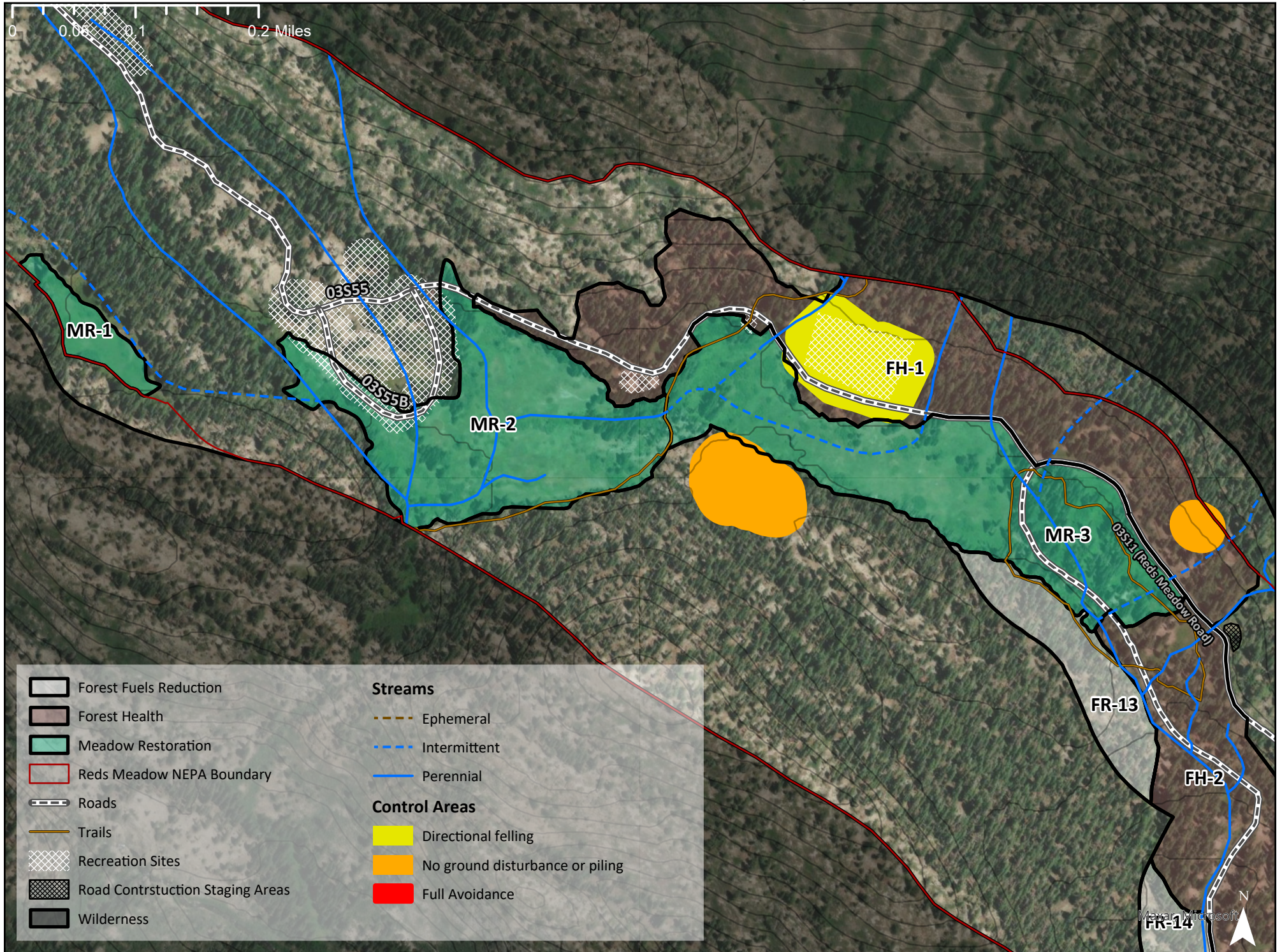
Red's Meadow II Project Overview



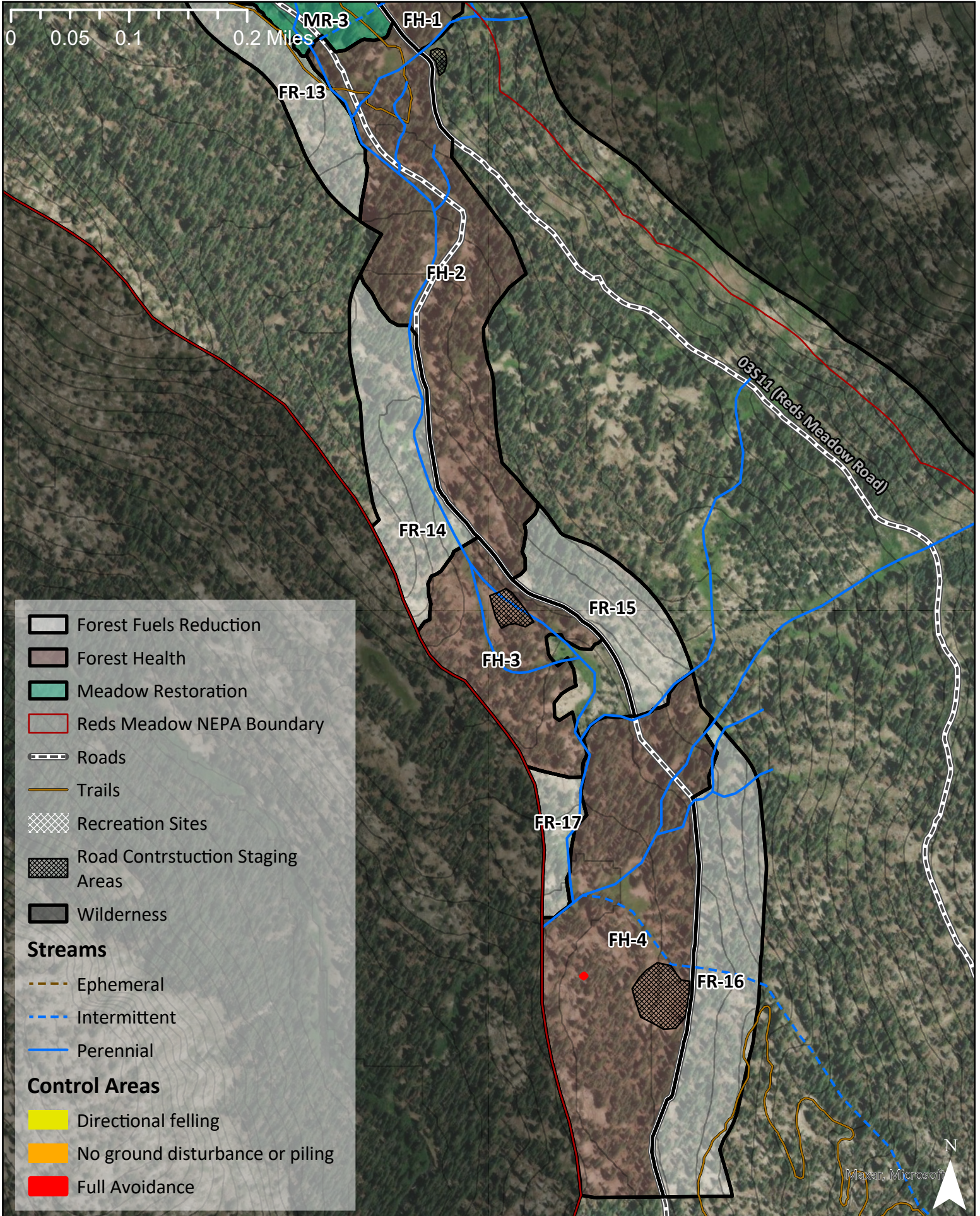
Red's Meadow II: North Map Overview



Red's Meadow II: North Map 1

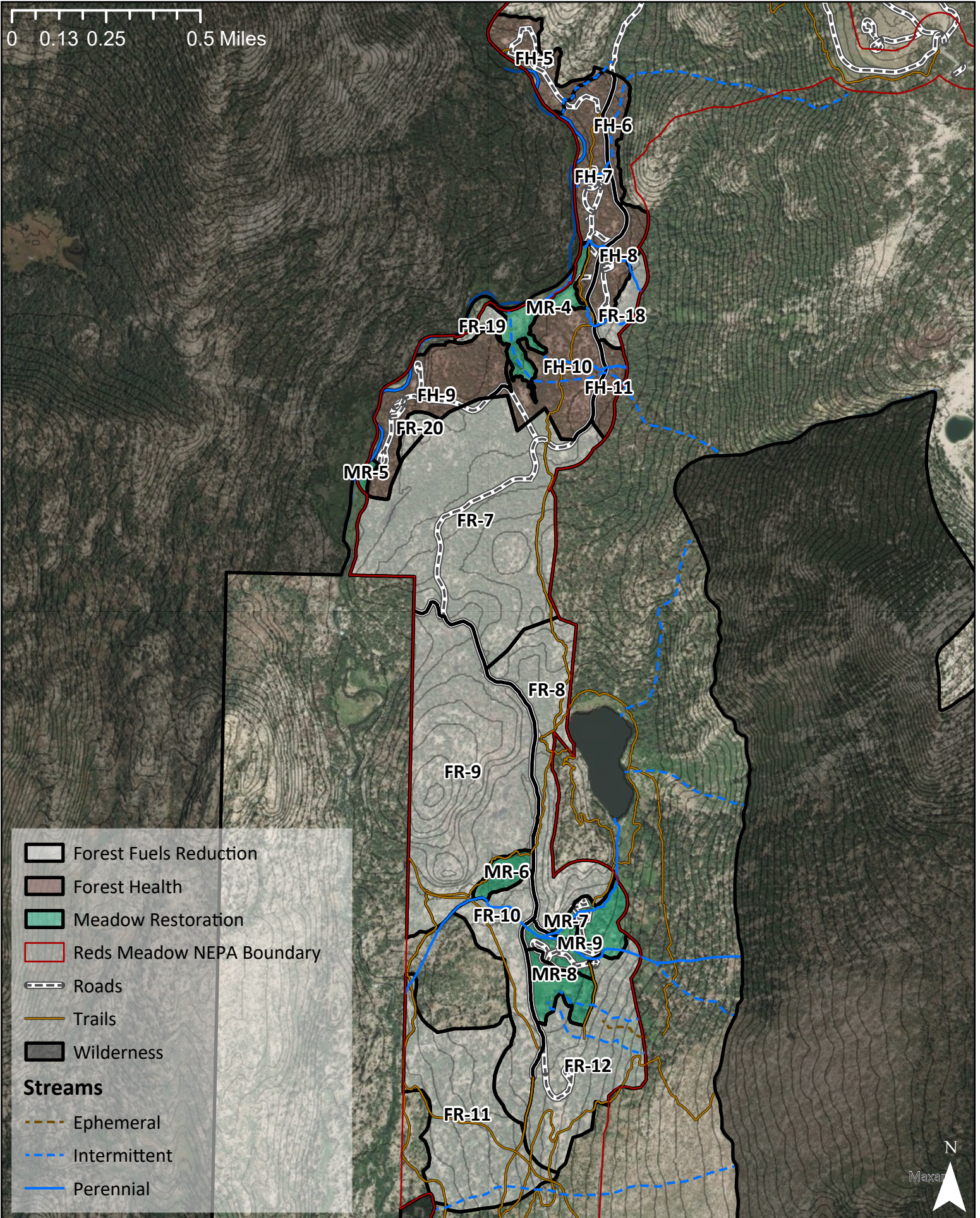


Red's Meadow II: North Map 2



Red's Meadow II: South Overview Map

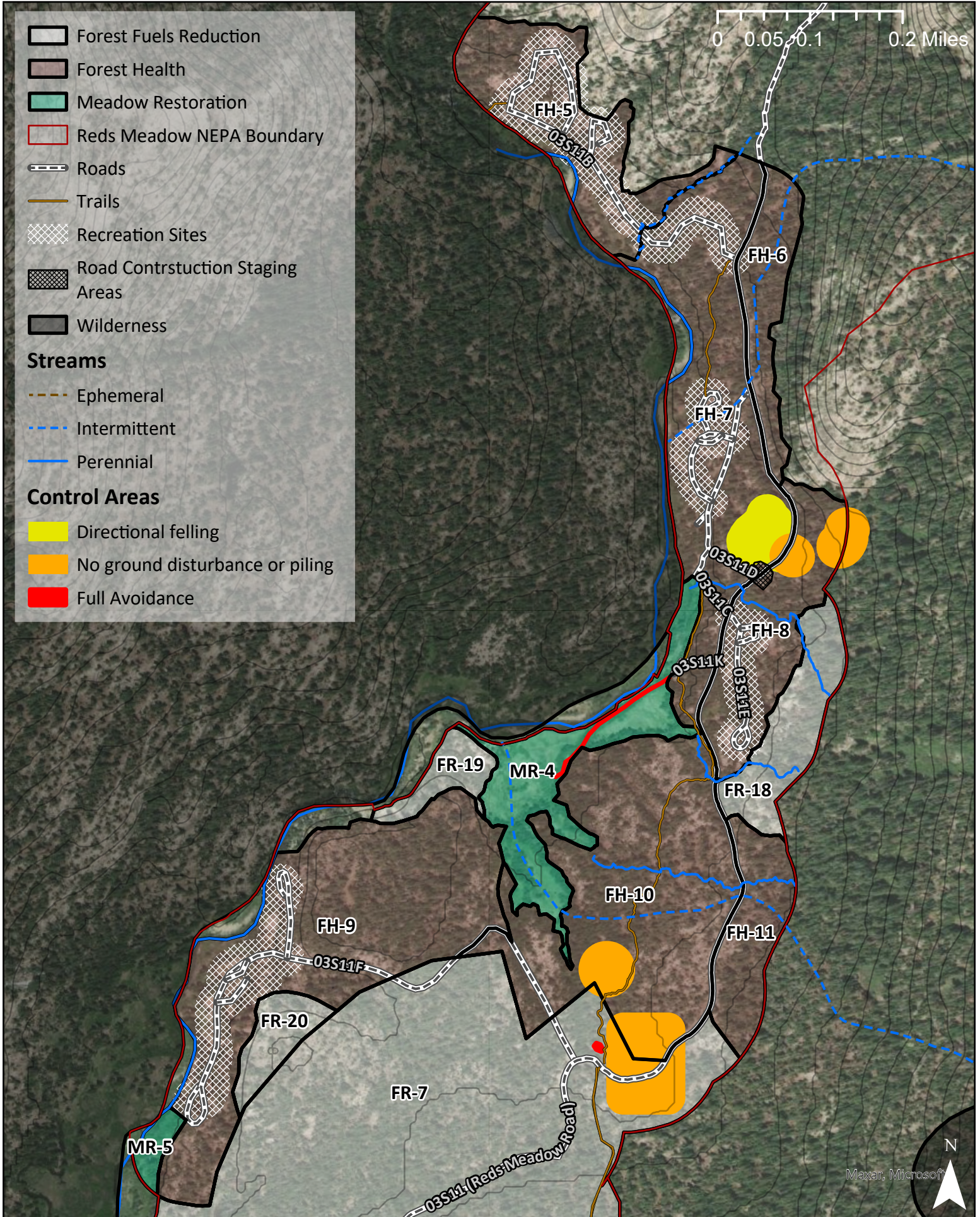
0 0.13 0.25 0.5 Miles



- Forest Fuels Reduction
 - Forest Health
 - Meadow Restoration
 - Reds Meadow NEPA Boundary
 - Roads
 - Trails
 - Wilderness
- Streams**
- Ephemeral
 - Intermittent
 - Perennial

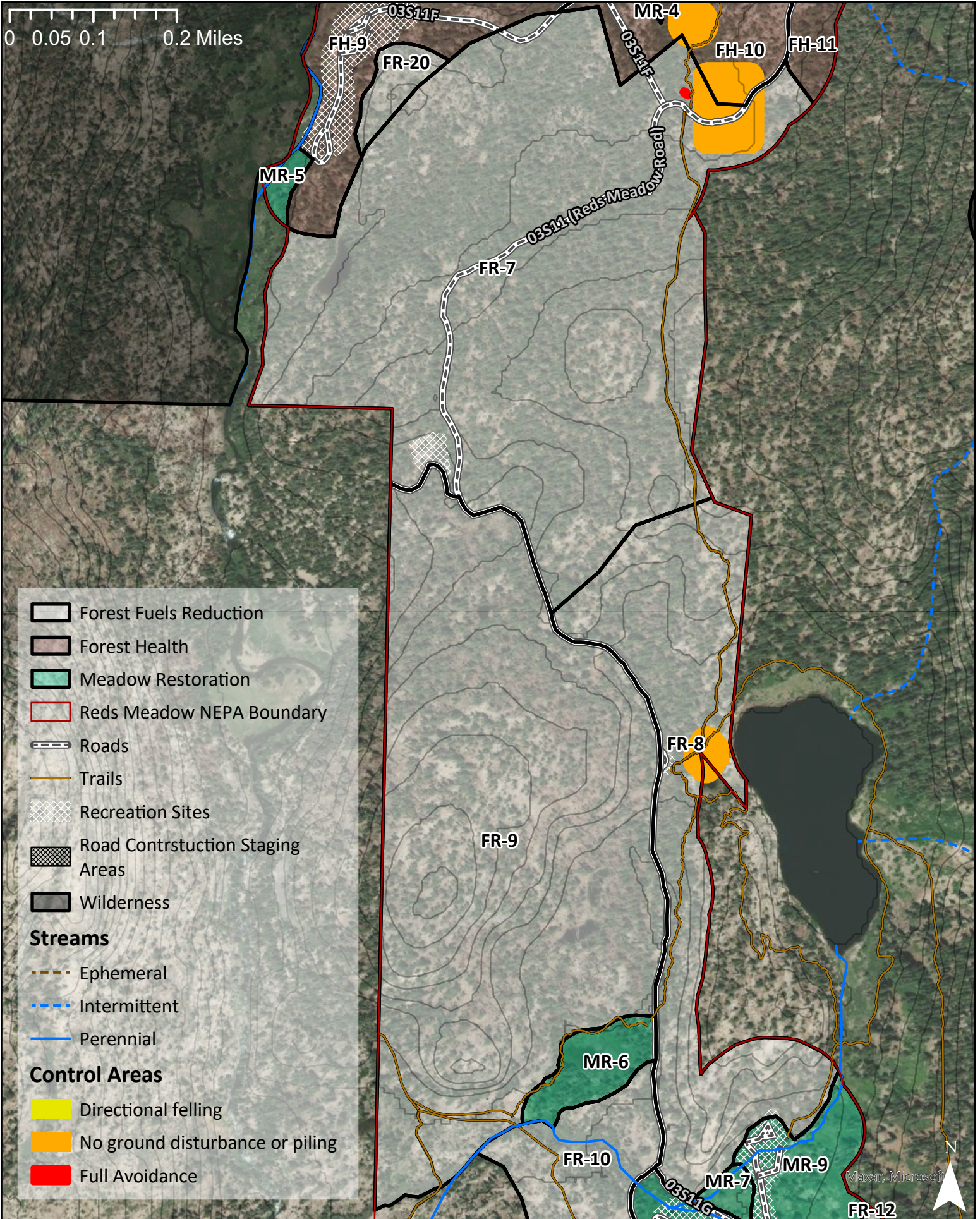
N
Maxar

Red's Meadow II: South Map 1



Red's Meadow II: South Map 2

0 0.05 0.1 0.2 Miles



- Forest Fuels Reduction
 - Forest Health
 - Meadow Restoration
 - Red's Meadow NEPA Boundary
 - Roads
 - Trails
 - Recreation Sites
 - Road Construction Staging Areas
 - Wilderness
- Streams**
- Ephemeral
 - Intermittent
 - Perennial
- Control Areas**
- Directional felling
 - No ground disturbance or piling
 - Full Avoidance

Maxar, Microsoft

Red's Meadow II: South Map 3

